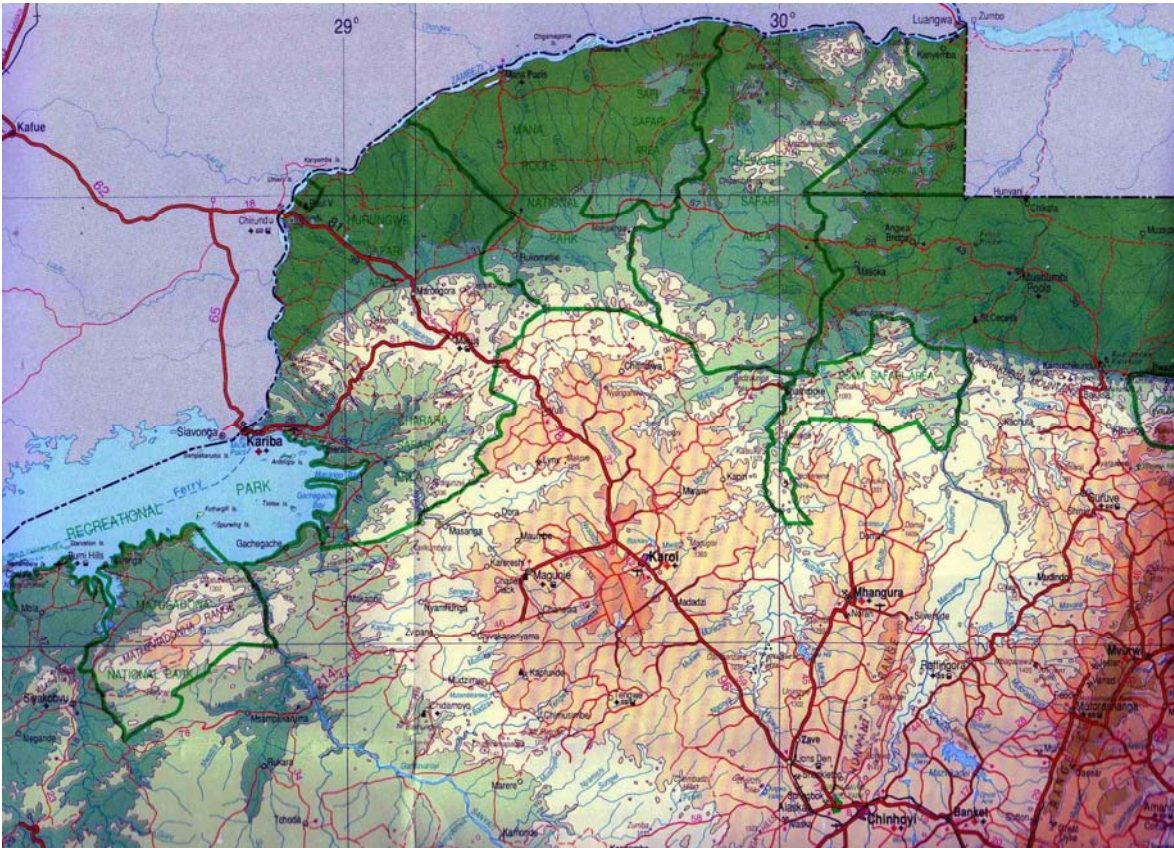
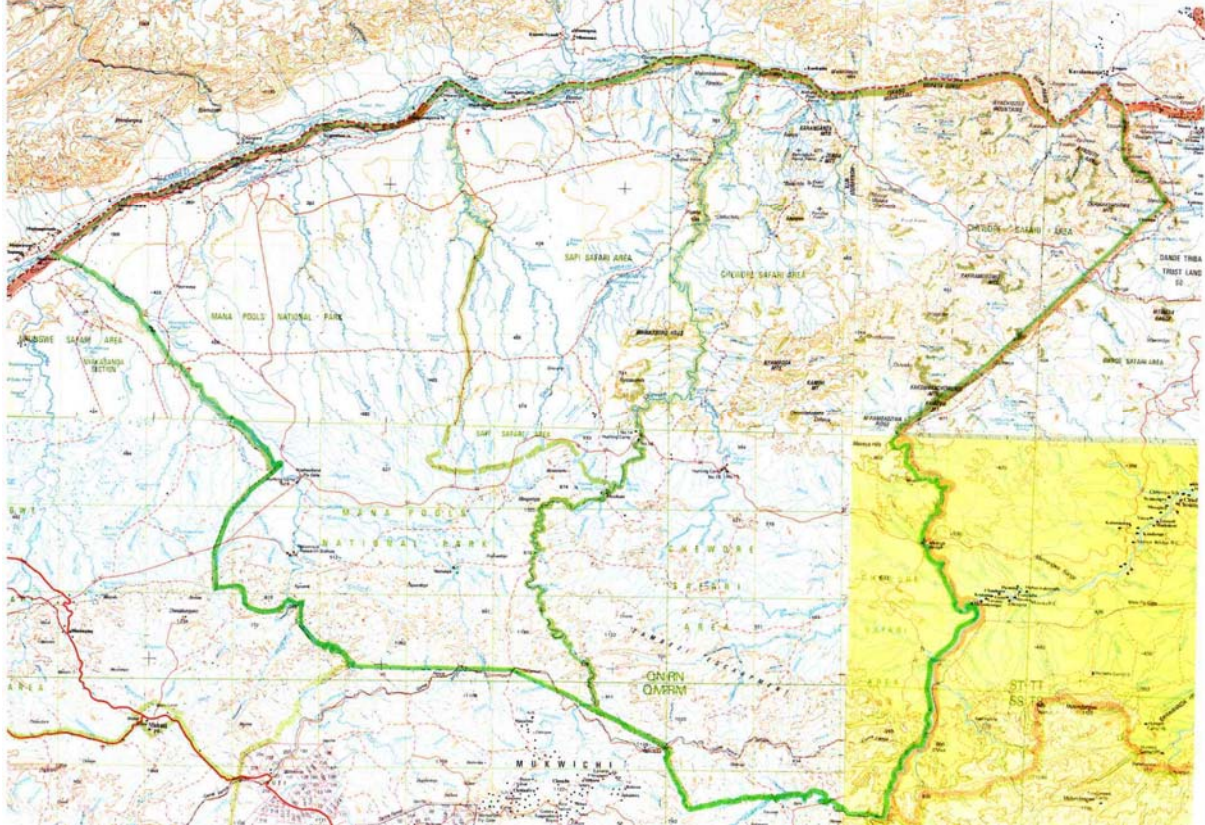


Maps and satellite images of Mana Pools National Park, Sapi and Chewore Safari Areas, Zimbabwe



Topographic map of northern Zimbabwe showing the location of Mana Pools National Park, Sapi and Chewore Safari Areas



Extract of official 1:250,000 map sheets showing boundaries, contours, roads, rivers and other features of the Mana Pools National Park, Sapi and Chewore Safari Areas, Zimbabwe



Google Earth satellite image of Kariba Dam (located upstream from the Mana Pools world heritage site) which has eliminated the natural cycle of flooding in the middle Zambezi and impacted the long-term ecology of the area.



Google Earth satellite image of the central portion of the Zambezi River at Mana Pools National Park, showing the area of the park headquarters (centre), the Mana and Chewure Rivers (right) and the Zambian territory to the north of the river (top)



Google Earth satellite image of the central portion of the Zambezi River at Mana Pools National Park, showing the area of the park headquarters (centre top), the Mana and Chewure Rivers (right) and the motorable tracks and accommodation facilities in this part of the park.



Google Earth satellite image of the hills and mountains on either side of the Zambezi River in the Mupata Gorge area, which has potential for construction of a major hydro-electric power facility that would flood the critical dry-season habitat of the middle Zambezi, and lead to a 50% reduction in the large mammal populations in the Mana Pools world heritage site.



Google Earth satellite image of the middle Zambezi River valley, showing the main tributaries on the south bank, namely the Rukomechi (bottom left), Sapi (centre) and Chewore (right). The steep mountains of the north bank (Zambia) are visible (top), as well as large parts of Mana Pools National Park (lower left, between the Rukomechi and Sapi Rivers), and Sapi Safari Areas (lower right, between the Sapi and Chewore Rivers). Most of the Chewore Safari Area lies further east (to right of this image)



Google Earth satellite image of the central portion of the Zambezi River at Mana Pools National Park, the islands and sand-banks in the river, the area of the park headquarters (centre), the Mana, Chewure and Sapi Rivers (right) and the extensive floodplain (with Long Pool visible at its southern extent (centre, bottom)).